



GMT MONTHLY MEMBERSHIP PROGRESS REPORT

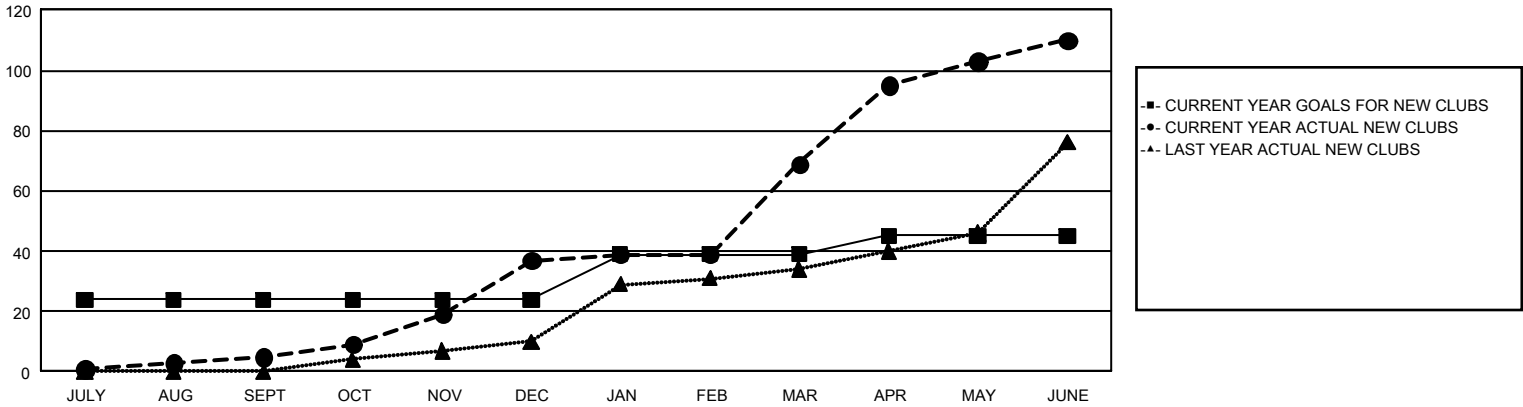
GAT Constitutional Area 5 - China

Results as of: 6/30/2025

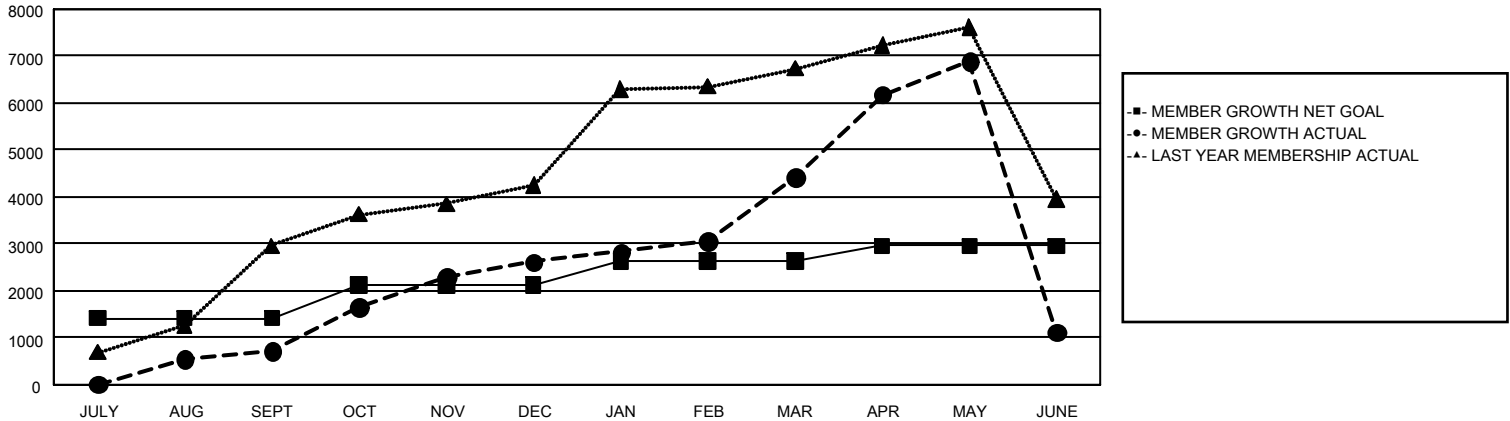
REPORT DOES NOT INCLUDE CLUBS IN UNDISTRICTED AREAS.

Clubs				Members			
RESULTS FOR 2024-2025				RESULTS FOR 2024-2025			
QUARTER	NEW CLUB GOAL	NEW CLUBS	DROPPED CLUBS	QUARTER	MEMBER GROWTH NET GOAL	MEMBER GROWTH ACTUAL	DROPPED MEMBERS ACTUAL (including transfers)
JULY/AUG/SEPT	24	5	2	JULY/AUG/SEPT	1,411	1,402	443
OCT/NOV/DEC	0	32	24	OCT/NOV/DEC	707	2,467	439
JAN/FEB/MAR	15	32	59	JAN/FEB/MAR	514	2,309	310
APR/MAY/JUNE	6	41	2	APR/MAY/JUNE	330	3,801	6,432

GOALS AND ACTUAL NEW CLUBS CUMULATIVE



GOALS AND ACTUAL MEMBERS CUMULATIVE



DROPPED CLUBS: 87		1,251 CLUBS OF 1,546 ADDED 1 OR MORE NEW MEMBERS	<u>GENDER DISTRIBUTION</u>	
			MALE	22,887 (60.41%)
			FEMALE	15,001 (39.59%)
<u>DROPPED MEMBERS</u>		CLICK HERE FOR CUMULATIVE MEMBERSHIP DATA		
DECEASED	21		TOTAL FAMILY UNIT MEMBERS 2,141	
CLUB CANCELLED	111			
OTHER	7,477		FAMILY MEMBERS PAYING HALF DUES 1,104	
TOTAL	7,609			